

The Walker Family Legacy

Presented by

Jennie Marsh Sandy Corkle Dee Allen

March 3, 2026



INTRODUCTIONS & BACKGROUNDS

Members of 2024 Docent Class
("The Cabinettes")

Jennie Marsh

Dee Allen

Sandy Corkle



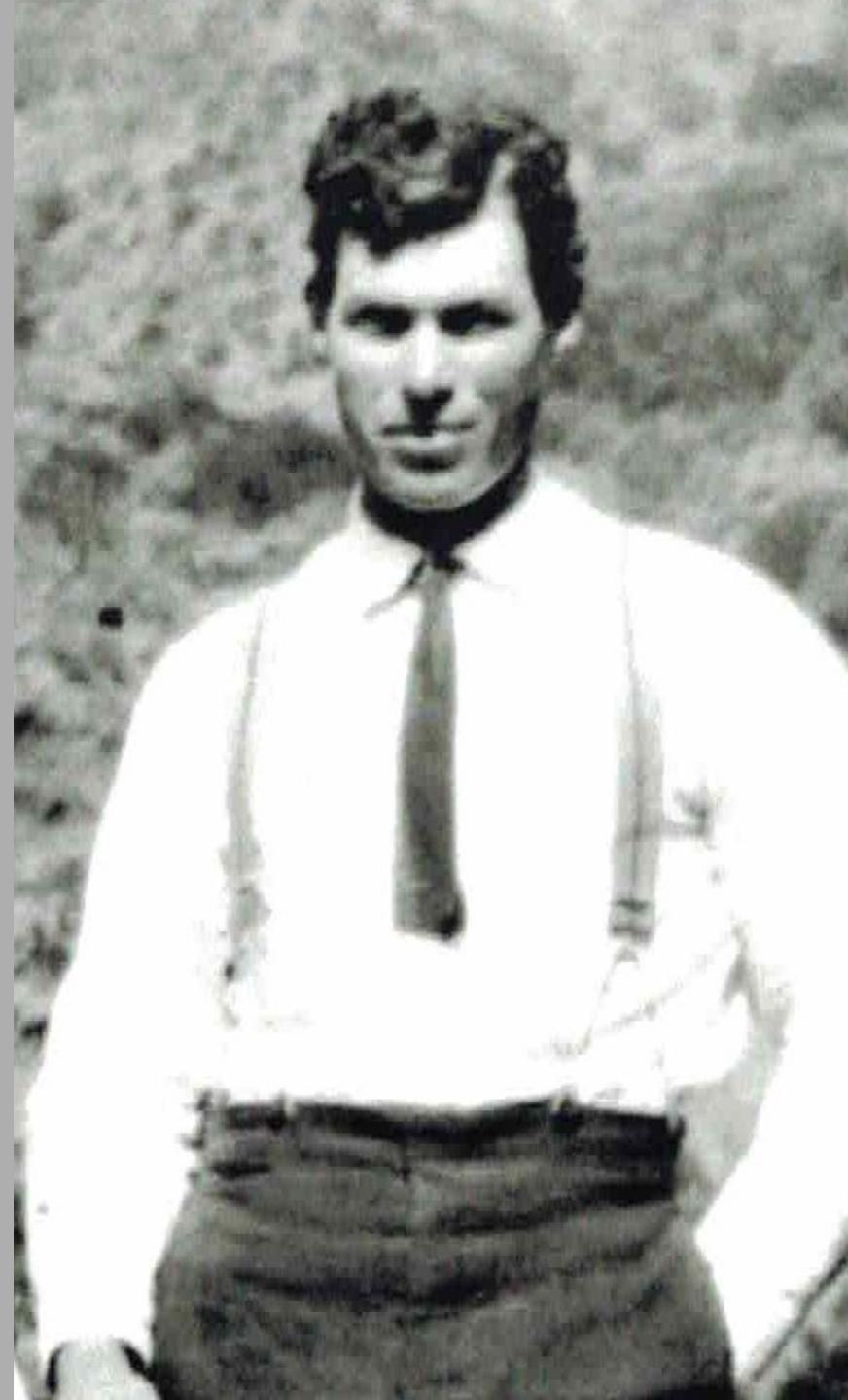
What does **LEGACY** mean?

Core Concept

At its heart, a legacy is about interconnection across time, involving a connection to the past and a responsibility to the future, making it a powerful concept for personal meaning and social change.

The Legacy of a Person

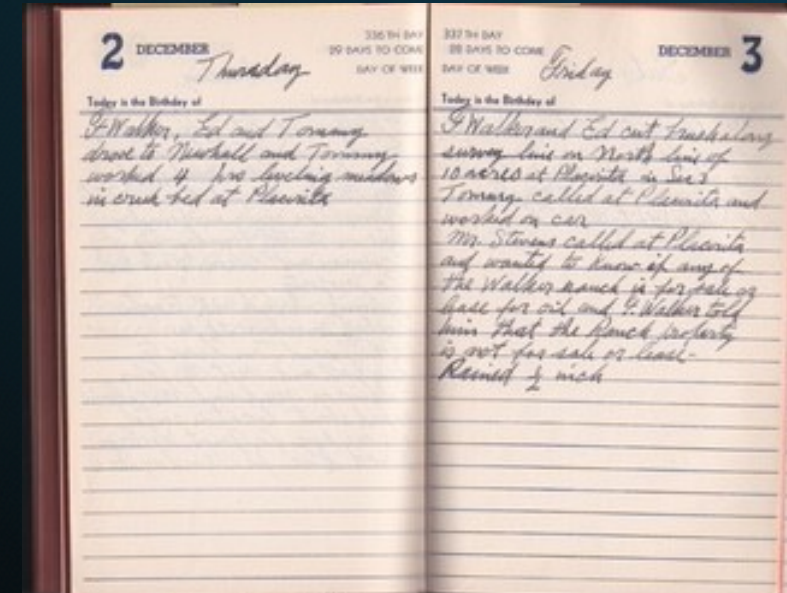
The lasting impact, influence, and memory they leave behind through their actions, values, lessons, and contributions. It's the story of who they were and the positive (or negative) imprint they made on the world and the people in it.



Frank Walker's Goal: Preserve Placerita for Future Generations

1948: A Pivotal Year

- Frank Walker meets with CA State and LA County to plan park and road
- Walker turns away 7 proposals to lease or buy Placerita from May-Dec 1948 (14 total calls (visits))
- Walker's determination and vision payoff in the creation of PCNA

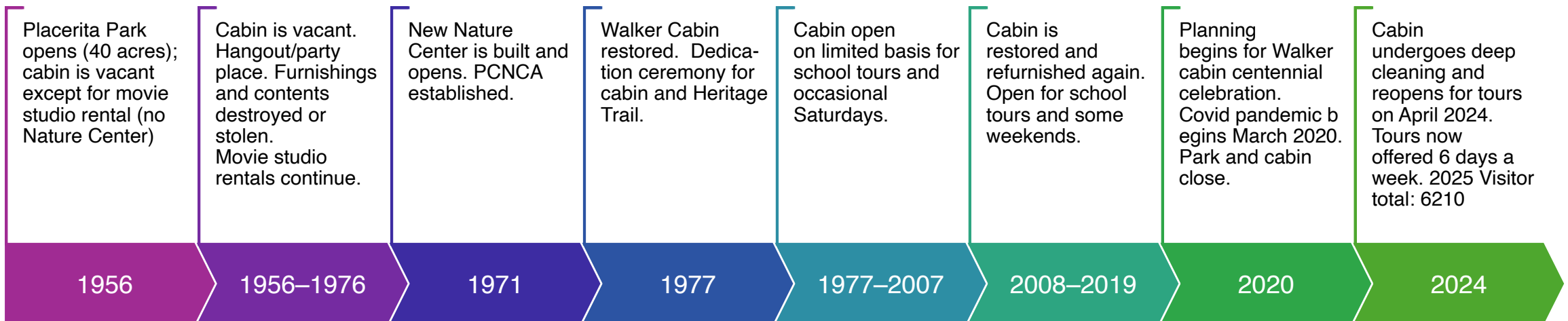


Two Sales: Two Parcels

- 1949: 40 acres sold to State of California. Frank was paid \$25K
- 1959: 288 additional acres sold to State of California. Frank was paid \$150K
 - Total: Approximately 350 acres (includes leased Nat'l Forest land in a separate deal and purchase of land from a local church)
- Placerita Canyon Natural Area now operated by L.A. County Parks under lease to the State of California



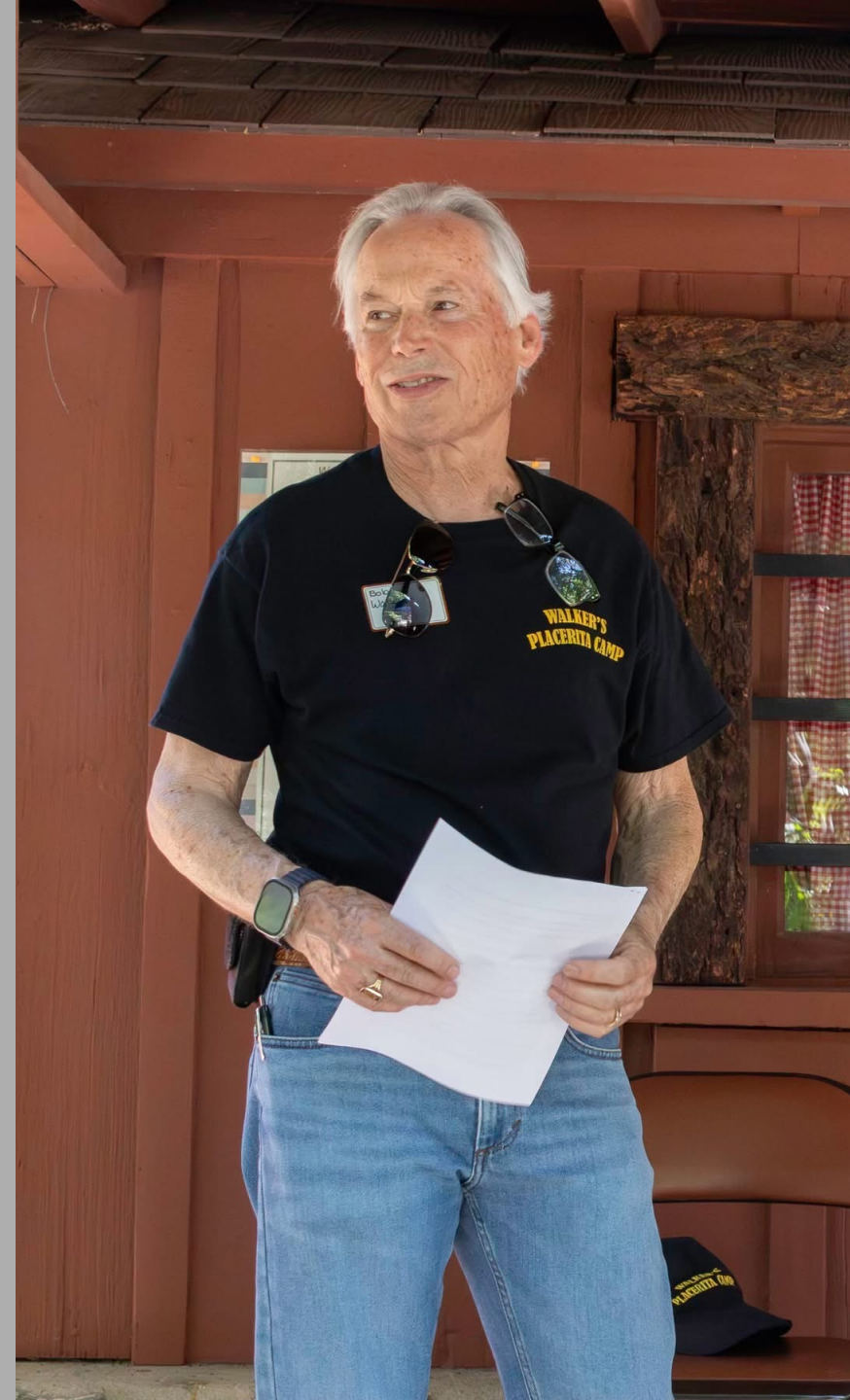
Walker Cabin Over the Years



Goal:

**Reopen the Cabin
and Share
Accurate Walker
Family History**

- Marc Alva and the deep clean began Jan 2024
- Call for volunteers (Jennie & Sandy : get those cards signed!!)
- Docent Class of 2024 Grad party: Jennie connects with Bob Walker
- Bob underscores the importance of accuracy in telling the Walker story
- Walker Cabin Committee restarts
- Work begins on many fronts



Initiatives and Support

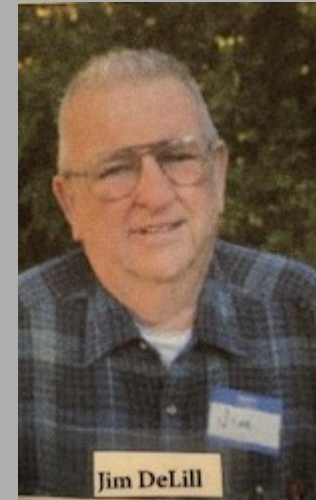
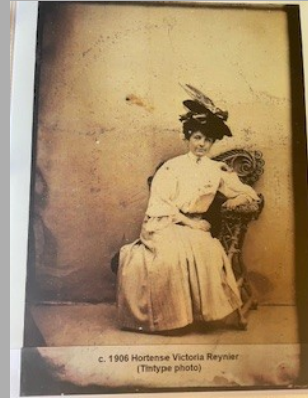
Restart Walker Cabin Committee to "steer the ship" and produce guidance materials for cabin docents

Build strong relationships with Walker family (resolve inaccuracies and reach consensus on research questions, conduct interviews with family, record and share human interest stories)

Develop programming and materials to attract visitors: Special events, The Walker Homes on Placerita trails – Map) topical notebooks, school tours, Open House, collaboration with amphitheater and other docent programs, Discovery Days, Walker Family Legacy video (in production)

Richness to Build Upon

Compassion and Care of Past and Current Docents, PCNC Staff, and Walker Family



Richness to Build Upon

Compassion and Care of Current Docents, PCNC Staff, and Walker Family

